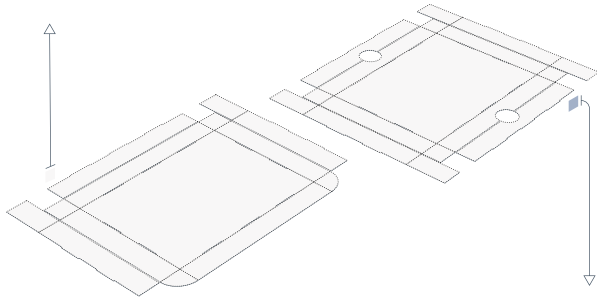


# Heritage® Reinforced Drop Front Boxes

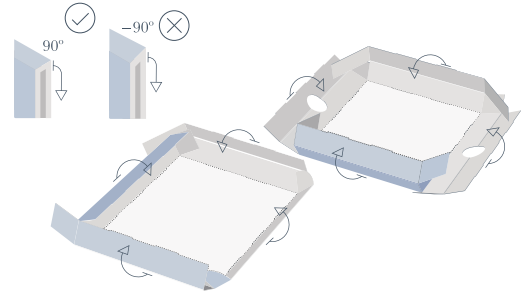
## T12: Custom Reinforced Two-Piece Box

Assembly Instructions

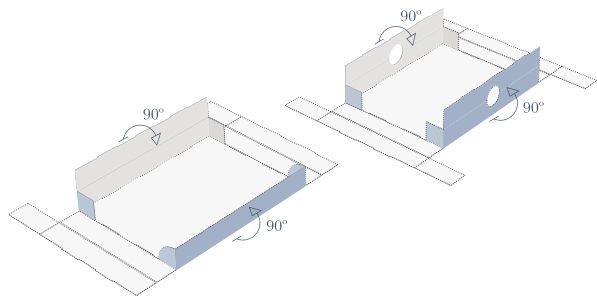
- ① Place flat box white side facing up. The crease lines should be visible, and the blue/gray side of the board facing down.



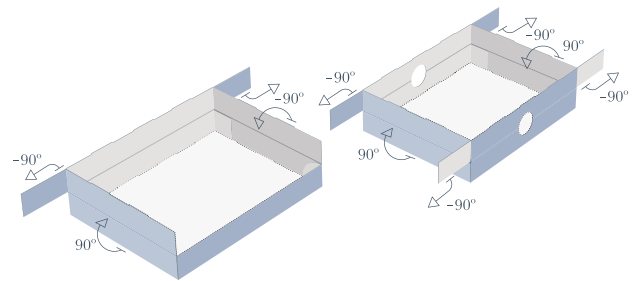
- ② Pre-crease all lines prior to snapping any walls into place. Pay extra attention to the double crease lines which are approximately 1/4" apart along doubled over the walls. It is critical that both crease lines are folded at a full 90° or more.



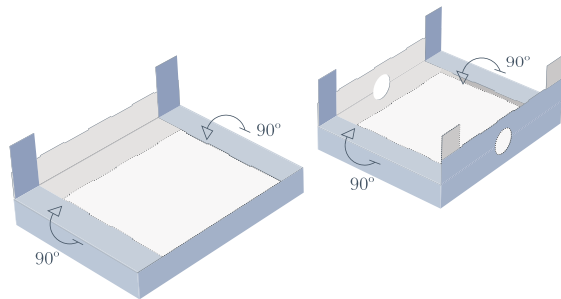
- ③ Fold up the two walls with the smaller inside flaps first. All flaps should be folded at 90°.



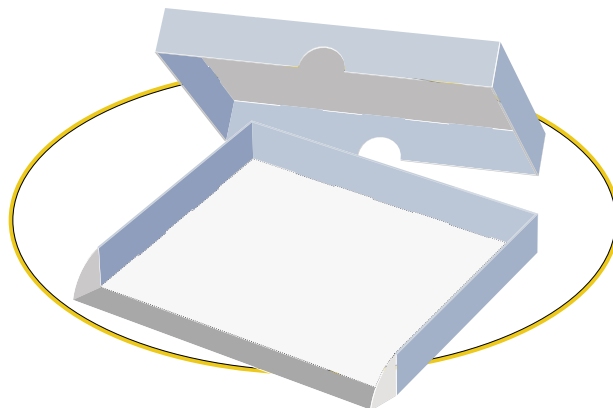
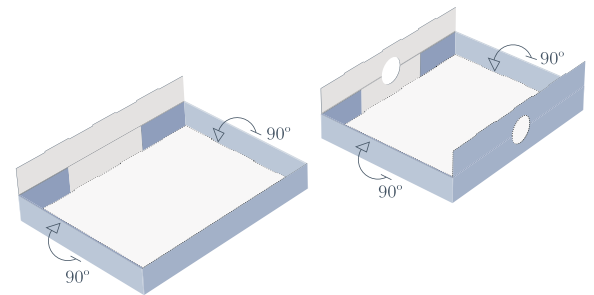
- ④ Fold up the perpendicular walls. The flaps attached to these walls fold at -90°. See step 2 about properly creasing these wall.



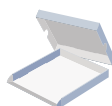
- ⑤ Snap the walls with the -90° flaps in place. You will see that these flaps are now flush along the perpendicular wall.



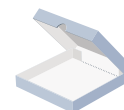
- ⑥ Fold the remaining two walls in place. The flaps from the two side walls should be sandwiched inside the wall and secure it in place. See step 2 about properly creasing this wall.



**Related Products:**



**Heritage® Print Storage Boxes**  
T16: Custom Two-Piece Box



**Heritage® Clamshell Box**  
T03: Custom Archival Clamshell Box