

# SPECTROLINE<sup>®</sup>

## OPTIMAX™ 365

**Our Most Powerful  
and Versatile UV-A  
LED Flashlight!**

### **APPLICATIONS:**

- **Nondestructive Testing (NDT)**
- **Quality Control**
- **Fluorescent Leak Detection**
- **Industrial Inspection**
- **UV-A Curing**
- **Photoactivation and UV-A Dosing**
- **Rare Document/Stamp/Artwork Examination**
- **And many more!**

**Powerful** — Ultra-high intensity up to  $50,000\mu\text{W}/\text{cm}^2$  of true UV-A (365 nm).

**Instant-on Operation** — Push the button and the lamp immediately reaches full power and is ready for use. Eliminates down time waiting for bulbs to warm up.

**Portable & Rugged** — Cordless. Use it anywhere! Stands up to heavy use in the field, shop or laboratory. Anodized aluminum lamp body minimizes corrosion.

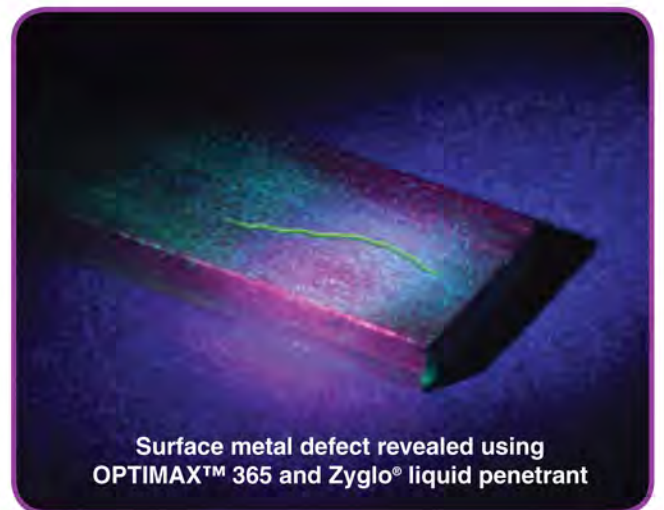
**Rechargeable** — Powered by a rechargeable NiMH battery. Provides 90 minutes of continuous inspection between charges (AC and DC chargers included).

**Long Life** — 30,000-hour LED bulb. Electronic Intensity Stabilizer ensures consistent performance. Beam strength will not fade between charges!

**Versatile** — Meets MIL and ASTM specs for FPI and MPI.



The **OPTIMAX™ 365** comes complete with smart AC and DC chargers, UV-absorbing spectacles, belt holster and padded carrying case. AC charger available in 120V, 230V, 240V or 100V versions.

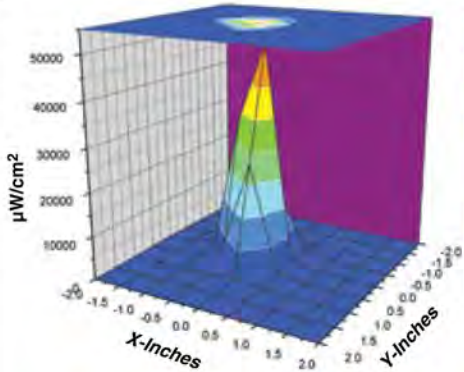


Surface metal defect revealed using  
OPTIMAX™ 365 and Zyglo® liquid penetrant

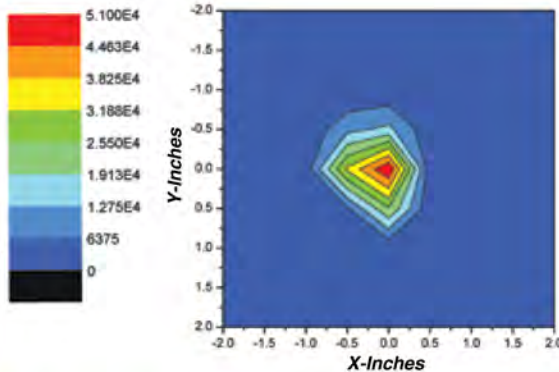


# OPTIMAX™ 365 *High-Intensity, Versatile, True UV-A LED Flashlight*

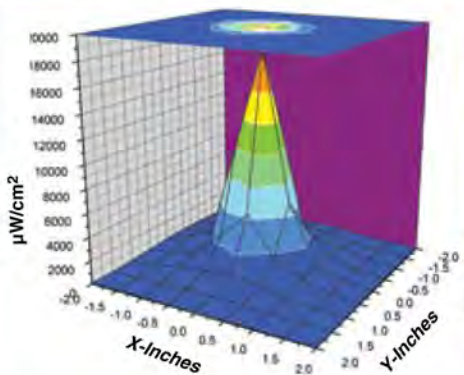
The cordless **OPTIMAX™ 365** is ergonomic, compact and lightweight. It's designed to provide ultimate freedom of movement during inspections. With an ultra-high intensity up to  $50,000\mu\text{W}/\text{cm}^2$ , it's our most powerful true UV-A (365 nm) LED flashlight.



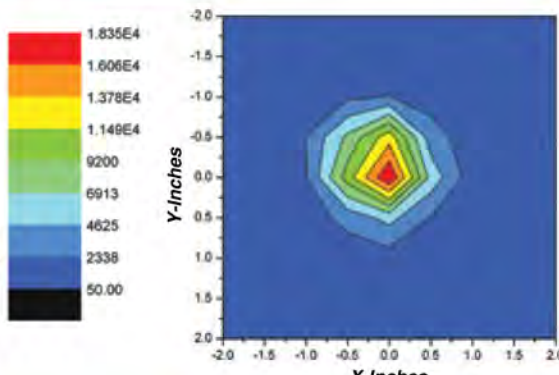
**SURFACE CONTOUR PROFILE AT 6 IN (15 CM)**



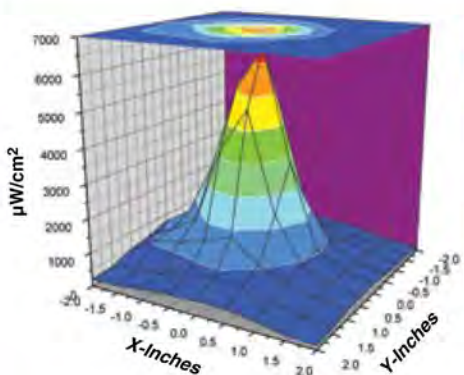
**TOP INTENSITY PROFILE AT 6 IN (15 CM)**



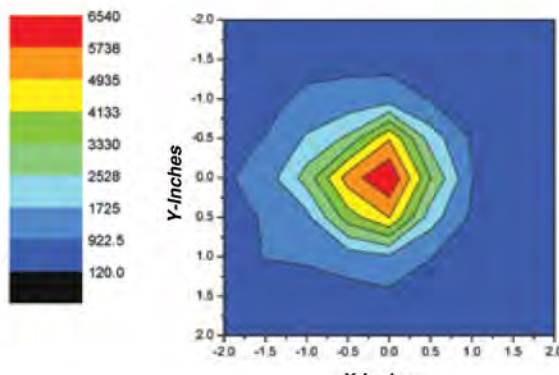
**SURFACE CONTOUR PROFILE AT 15 IN (38 CM)**



**TOP INTENSITY PROFILE AT 15 IN (38 CM)**



**SURFACE CONTOUR PROFILE AT 24 IN (61 CM)**



**TOP INTENSITY PROFILE AT 24 IN (61 CM)**

## KEY FEATURES

- Electronic Intensity Stabilizer
- Very low visible light emission: under 2 foot-candles (20 Lux)
- 30,000-hour LED bulb life
- Battery strength indicator light
- Charge status indicator light
- Corrosion-resistant, anodized aluminum lamp body
- Rechargeable NiMH battery

## SPECIFICATIONS

### Product Number

OPX-365\*

### Lamp Style

Cordless LED Flashlight

### Lamp Head Diameter

2 in (5.1 cm)

### Length

8 in (20.3 cm)

### Weight (with battery)

11.8 oz (335 g)

### Power Requirement

3.6V, 2AH NiMH internal battery stick (rechargeable)

### Run Time

90 minutes (continuous)

### Charge Time

4 hours

### Nominal Steady-State UV-A Intensity:

6" (15 cm)— $50,000\mu\text{W}/\text{cm}^2$

15" (38 cm)— $18,000\mu\text{W}/\text{cm}^2$

24" (61 cm)— $6,000\mu\text{W}/\text{cm}^2$

\* Model **OPX-365C** also available for curing applications.

### Nominal Steady-State UV-A Intensity:

6" (15 cm)— $60,000\mu\text{W}/\text{cm}^2$

**NOTE:** All readings taken with a Spectroline® AccuMAX™ Series meter.

*Talas*  
www.talasonline.com

330 Morgan Ave.  
Brooklyn NY, 11211  
Telephone: (212)219-0770  
Fax: (212)219-0735